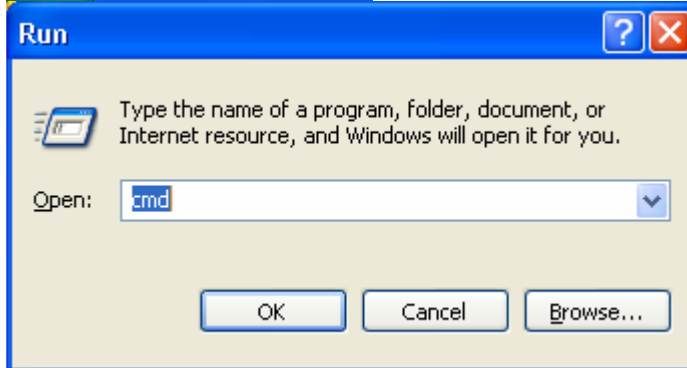


“Wireless Mac Address” – Windows XP

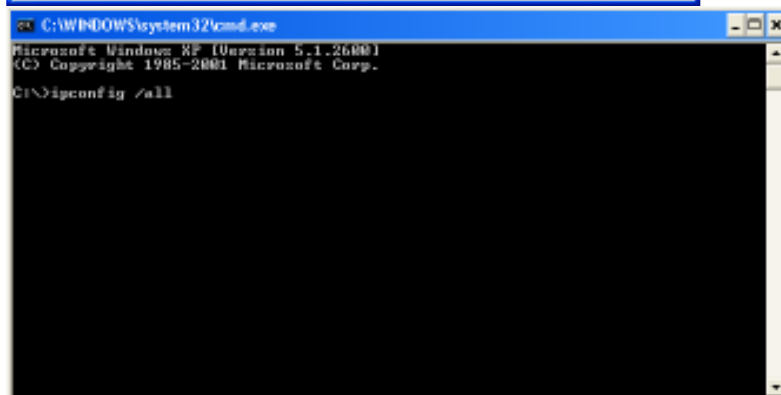
1.) Click on the Start Menu and select “Run”



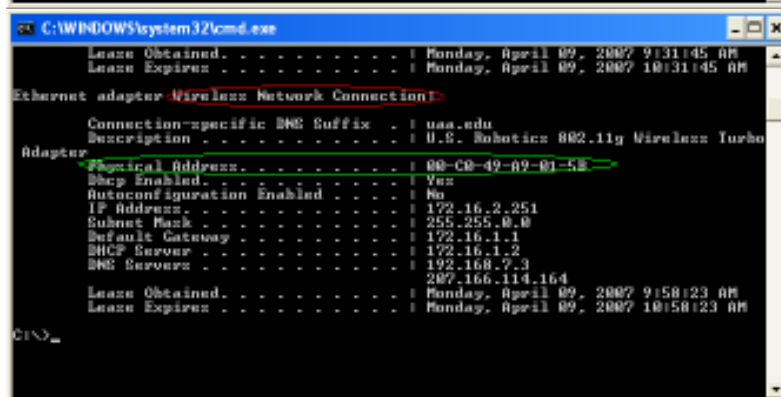
2.) Type “cmd” in the “Run Window”. Then press enter.



3.) In the black and gray screen (command prompt) type “ipconfig /all”. Press enter.

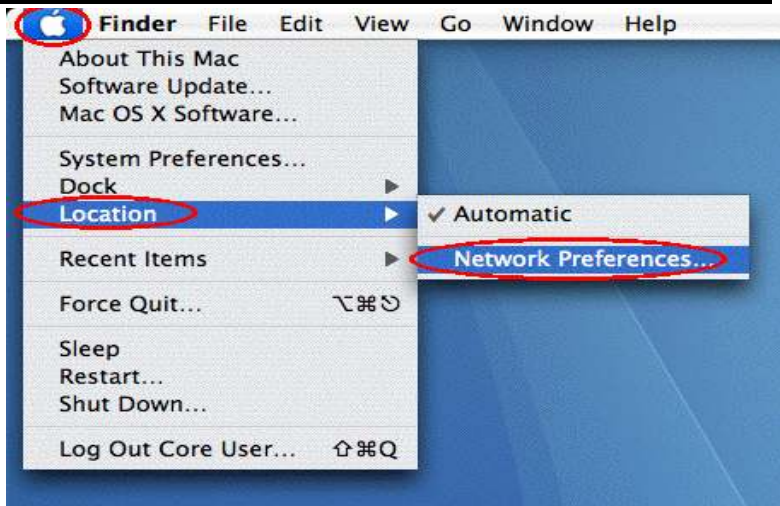


4.) Look for “Wireless Network Connection” or “Wireless Adapter”. Then locate “Physical Address”. That is your Mac Address.

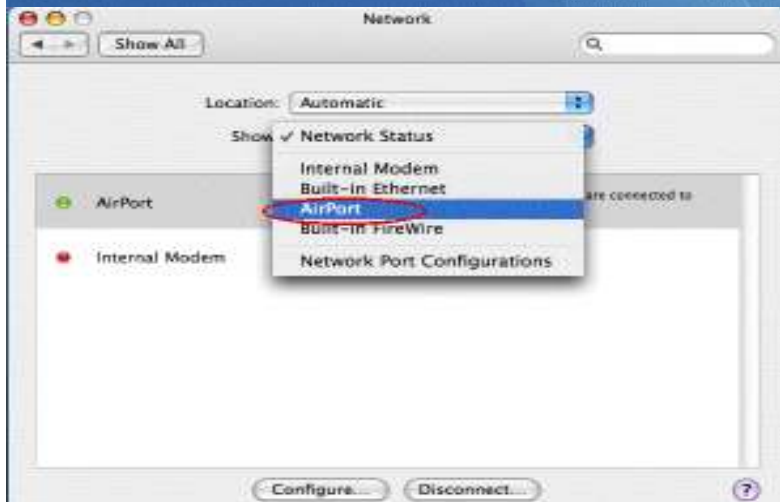


“Wireless Mac Address” - Mac OS X

1.) Click on the Apple Menu at the top left of the screen, then click on 'Location', then 'Network Preferences'



2.) A 'Network' window should appear. From the 'Show:' pulldown, select 'AirPort'.



3.) Click on the 'AirPort' tab (if necessary). The MAC address is the string of 6 pairs of numbers and letters that appears after the heading 'AirPort ID'.

